

The Strongest Link in the Cabling Chain

The FusionLug is a durable, low voltage-drop termination fabricated from the stranded ends of the cable itself. This very reliable “lug” is formed using high strand count power cable. Since the wire is used to make the lug itself, the circuit current rating is limited only by the wire and not the lug.

www.cablecotech.com

✓ RoHS Compliant

Standard FusionLug with PowerFlex Wire and Lead Free Solder Dipped *Consult factory for larger than 4/0 (107mm²).

STRAIGHT FUSIONLUG - INCHES (MM)												
WIRE GAUGE* (MM ²)	ONE HOLE					TWO HOLE						MAX. CLEARANCE HOLE
	A1	A2	B	C	D1	A1	A2	B	C	D1	D2	STD.
10 (5.3)	1.00 (25.4)	1.25 (31.8)	0.45 (11.4)	0.09 (2.3)	0.23 (5.8)	1.50 (38.1)	1.75 (44.5)	0.45 (11.4)	0.09 (2.3)	0.23 (5.8)	0.75 (19.1)	0.35" (8.9) DIA.
8 (8.4)	1.00 (25.4)	1.25 (31.8)	0.50 (12.7)	0.10 (2.5)	0.25 (6.4)	1.50 (38.1)	1.75 (44.5)	0.50 (12.7)	0.10 (2.5)	0.25 (6.4)	0.75 (19.1)	0.40" (10.2) DIA.
6 (13.3)	1.00 (25.4)	1.25 (31.8)	0.50 (12.7)	0.13 (3.3)	0.25 (6.4)	1.50 (38.1)	1.75 (44.5)	0.50 (12.7)	0.13 (3.3)	0.25 (6.4)	0.75 (19.1)	0.40" (10.2) DIA.
4 (21.2)	1.00 (25.4)	1.25 (31.8)	0.50 (12.7)	0.16 (4.1)	0.25 (6.4)	1.50 (38.1)	1.75 (44.5)	0.50 (12.7)	0.16 (4.1)	0.25 (6.4)	0.75 (19.1)	0.40" (10.2) DIA.
2 (33.6)	1.25 (31.8)	1.50 (38.1)	0.70 (17.8)	0.16 (4.1)	0.35 (8.9)	1.75 (44.5)	2.00 (50.8)	0.70 (17.8)	0.16 (4.1)	0.35 (8.9)	0.90 (22.9)	0.60" (15.2) DIA.
1/0 (53.5)	1.25 (31.8)	1.50 (38.1)	0.80 (20.3)	0.19 (4.8)	0.40 (10.2)	1.75 (44.5)	2.00 (50.8)	0.80 (20.3)	0.19 (4.8)	0.40 (10.2)	0.90 (22.9)	0.70" (17.8) DIA.
2/0 (67.4)	1.25 (31.8)	1.50 (38.1)	0.80 (20.3)	0.26 (6.6)	0.40 (10.2)	1.75 (44.5)	2.00 (50.8)	0.80 (20.3)	0.26 (6.6)	0.40 (10.2)	0.90 (22.9)	0.70" (17.8) DIA.
4/0 (107)	1.25 (31.8)	1.50 (38.1)	1.00 (25.4)	0.32 (8.1)	0.50 (12.7)	1.75 (44.5)	2.00 (50.8)	1.00 (25.4)	0.32 (8.1)	0.50 (12.7)	0.90 (22.9)	0.90" (22.9) DIA.

BENT FUSIONLUG - INCHES (MM)												
WIRE GAUGE* (MM ²)	ONE HOLE					TWO HOLE						MAX. CLEARANCE HOLE
	A1	A3	B	C	D1	A1	A3	B	C	D1	D2	STD.
10 (5.3)	1.00 (25.4)	0.50 (12.7)	0.45 (11.4)	0.09 (2.3)	0.23 (5.8)	1.50 (38.1)	0.50 (12.7)	0.45 (11.4)	0.09 (2.3)	0.23 (5.8)	0.75 (19.1)	0.35" (8.9) DIA.
8 (8.4)	1.00 (25.4)	0.50 (12.7)	0.50 (12.7)	0.10 (2.5)	0.25 (6.4)	1.50 (38.1)	0.50 (12.7)	0.50 (12.7)	0.10 (2.5)	0.25 (6.4)	0.75 (19.1)	0.40" (10.2) DIA.
6 (13.3)	1.00 (25.4)	0.50 (12.7)	0.50 (12.7)	0.13 (3.3)	0.25 (6.4)	1.50 (38.1)	0.50 (12.47)	0.50 (12.7)	0.13 (3.3)	0.25 (6.4)	0.75 (19.1)	0.40" (10.2) DIA.
4 (21.2)	1.00 (25.4)	0.50 (12.7)	0.50 (12.7)	0.16 (4.1)	0.25 (6.4)	1.50 (38.1)	0.50 (12.7)	0.50 (12.7)	0.16 (4.1)	0.25 (6.4)	0.75 (19.1)	0.40" (10.2) DIA.
2 (33.6)	1.25 (31.8)	0.75 (19.1)	0.70 (17.8)	0.16 (4.1)	0.35 (8.9)	1.75 (44.5)	0.75 (19.1)	0.70 (17.8)	0.16 (4.1)	0.35 (8.9)	0.90 (22.9)	0.60" (15.2) DIA.
1/0 (53.5)	1.25 (31.8)	0.75 (19.1)	0.80 (20.3)	0.19 (4.8)	0.40 (10.2)	1.75 (44.5)	0.75 (19.1)	0.80 (20.3)	0.19 (4.8)	0.40 (10.2)	0.90 (22.9)	0.70" (17.8) DIA.
2/0 (67.4)	1.25 (31.8)	0.75 (19.1)	0.80 (20.3)	0.26 (6.6)	0.40 (10.2)	1.75 (44.5)	0.75 (19.1)	0.80 (20.3)	0.26 (6.6)	0.40 (10.2)	0.90 (22.9)	0.70" (17.8) DIA.
4/0 (107)	1.25 (31.8)	0.75 (19.1)	1.00 (25.4)	0.32 (8.1)	0.50 (12.7)	1.75 (44.5)	0.75 (19.1)	1.00 (25.4)	0.32 (8.1)	0.50 (12.7)	0.90 (22.9)	0.90" (22.9) DIA.

STUD	CLEARANCE HOLE (STANDARD)	
	STD (INCHES)	METRIC (MM)
#6	0.150	4.0
#8	0.177	4.5
#10	0.201	5.5
#12	0.228	6.0
1/4	0.266	7.0
5/16	0.332	8.5
3/8	0.397	10.0
7/16	0.469	12.0
1/2	0.531	13.5
M4	0.170	4.5
M5	0.209	5.5
M6	0.257	6.5
M7	0.295	7.5
M8	0.332	8.5
M10	0.413	10.5
M12	0.516	13.0
M11	0.469	12.0
M13	0.531	13.5

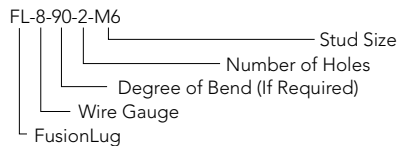
All sizes shown are MAX sizing

Tolerances:

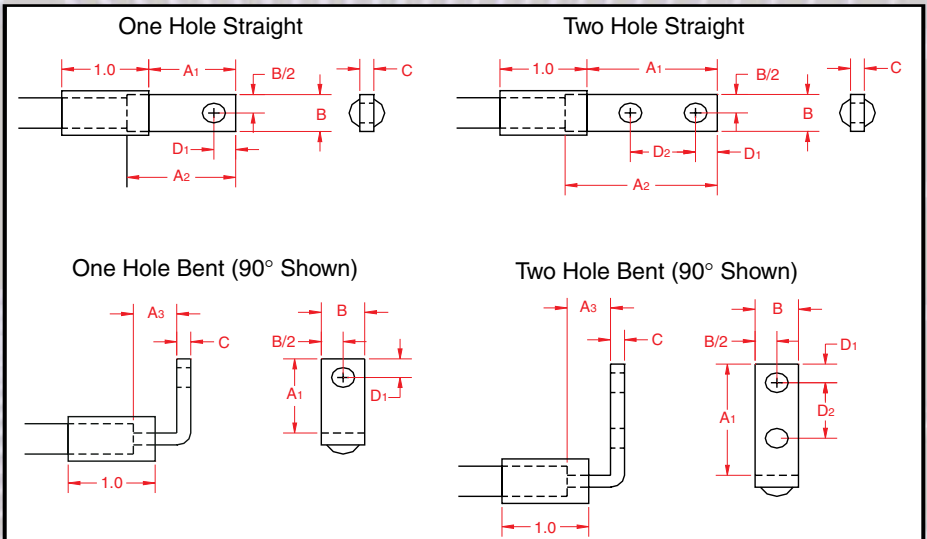
A1= Free Space +0.1/-0" (+2.5mm/-0)
 A2= Total Length +/-0.1" (+/- 2.5mm)
 A3= Bent Space +/-0.1" (+/- 2.5mm)
 B= Width +/-0.02" (+/- 0.5mm)
 C= Thickness Max
 Hole Diameter, B/2, D1, D2 +/- 0.01" (+/- 0.3mm)
 Angle +/- 5 Degrees

- Above Dimensions with PowerFlex Wire and Lead Free Solder Dipped
 - Custom FusionLug Available

FusionLug Part Numbering Method:



- All Standard FusionLugs Come with Shrink Tubing: 1 - 1.5" Total Length, Depending on AWG Size.



North and South America

Cableco Technologies
 1750 Junction Avenue
 San Jose, CA 95112
 Phone: 408-453-9500
 Fax: 408-943-6655
 Email: sales@cablecotech.com
 Web: www.cablecotech.com

Europe

Methode Electronics Ireland, Ltd.
 Unit H, Crossagalla Business Park
 Ballysimon Rd. • Limerick, Ireland
 Phone: +353 (0) 61 401222
 Fax: +353 (0) 61 401942
 Email: info@methode.com

Far East

Methode Electronics Far East, Pte. Ltd.
 60 Alexandra Terrace, #02-09A, The Comtech
 Singapore 118502
 Phone: (65) 6861 5444
 Fax: (65) 6861 4777
 Email: info@methode.com