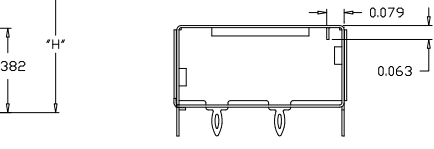
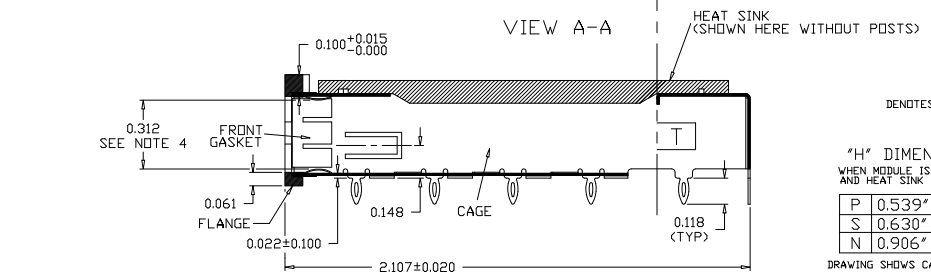
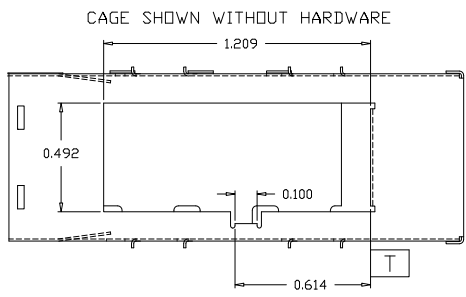
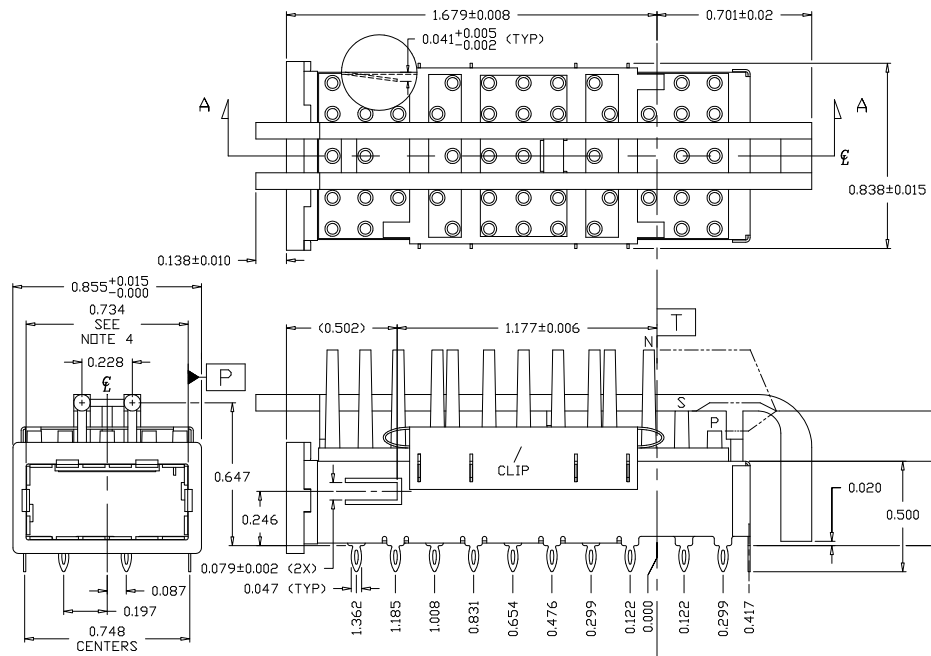


REVISION AND CHANGE EFFECTIVITY DATE				
LTR.	ECN	DESCRIPTION	DATE	APP'D.



ORDERING INFO:

DM9054-F-H-X-2L

— DENOTES 2 LIGHTPIPES

PLATING OPTIONS:
(CALL ARE RoHS COMPLIANT)

-R FOR 100µm MATTE TIN OVER 50µm NICKEL
NOT INTENDED FOR REFLDW
WAVE SOLDER ONLY - WAVE TEMP. 260°C FOR 6 SEC. MAX

-N FOR 100µm NICKEL
NOT INTENDED FOR REFLDW
WAVE SOLDER ONLY - WAVE TEMP. 260°C FOR 6 SEC. MAX

HEAT SINK OPTION:
-P FOR PCI HEIGHT
-S FOR SAN HEIGHT
-N FOR NETWORK HEIGHT (NET)

SERIES

DENOTES FLANGE STYLE

"H" DIMENSION

WHEN MODULE IS INSERTED
AND HEAT SINK IS RAISED

P	0.539"	PCI
S	0.630"	SAN
N	0.906"	NET

DRAWING SHOWS CAGE WITHOUT MODULE

NOTES:

- 1) CAGE MATERIAL: 0.010" THICK BRASS C2680, FULL HARD. FLANGE IS 0.020" THICK. PLATING: SEE PLATING OPTIONS.
- 2) FRONT GASKET MATERIAL: 0.0024" THICK BERYLLIUM COPPER, NICKEL PLATED. SPOT WELDED TO CAGE.
- 3) HEAT SINK AND FLANGE MATERIAL: ZAMAC 3. NICKEL PLATED.
- 4) WHEN GASKET IS FULLY COMPRESSED.
- 5) CLIP MATERIAL: 0.010" THICK BERYLLIUM COPPER, PLATING: NICKEL.
- 6) ELASTOMERIC GASKET: ELECTRICALLY CONDUCTIVE SILICONE. 94V-0 FLAME RATING.
- 7) LIGHTPIPE MATERIAL: CLEAR POLYCARBONATE
- 8) OPERATING AND STORAGE TEMPERATURE: -40°C TO +125°C

DO NOT SCALE DRAWING.



EXPERIMENTAL NO:		DIVISION ASSIGNED: dataMate Division	
TOLERANCE UNLESS OTHERWISE SPECIFIED	MATERIAL: SEE NOTES	DRAWN BY: A. PIRILLIS	DATE: 11/09/12
METRIC	INCHES	CHECKED BY: J. LLORENS	DATE: 11/09/12
±	FRACTION	ENGR. APPROVAL: B. SKEPNEK	DATE: 11/09/12
±	DEC. XX ± .010	APPROVED BY: A. CHIAPPETTA	DATE: 11/09/12
±	XXX ± .005	PART NO. CLASSIFICATION:	
±	ANGLES		
±	TOOLING DWG		
±	PART DWG		
±	BREAK SHARP EDGES		
±	REMOVE ALL BURRS		
<p>THE INFORMATION DISCLOSED IN THIS DOCUMENT IS PROPRIETARY TO METHODE ELECTRONICS, INC. AND MAY NOT BE USED FOR MANUFACTURE OR ANY OTHER PURPOSE WITHOUT THE WRITTEN CONSENT OF METHODE, OFFERS SUBJECT TO CHANGE AS THEY MAY OCCUR WITH RESPECT TO PRODUCT IMPROVEMENT.</p>			
SIZE C	CODE IDENT.	DWG. NUMBER	Rev.
SCALE:		DM9054-F-H-X-2L	-
			SHT. 1 OF 2

