

PIN TYPES
(SCALE 2X)

HALF LENGTH



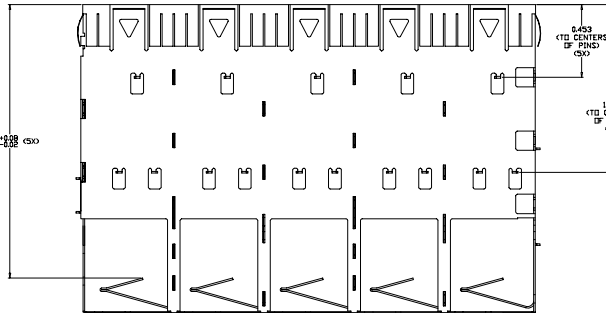
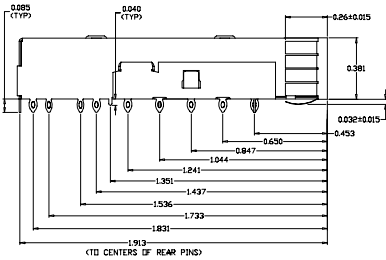
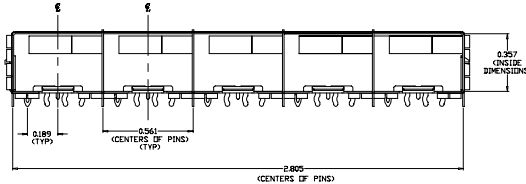
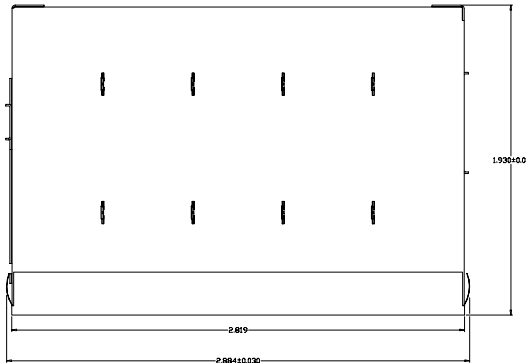
SMALL PIN



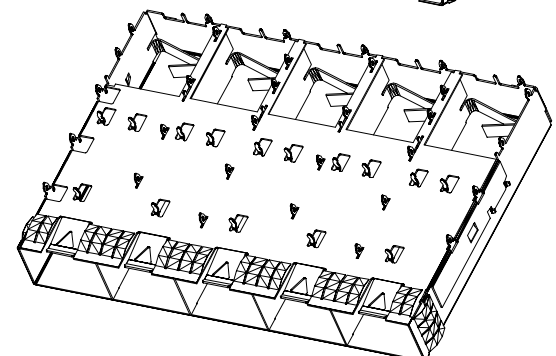
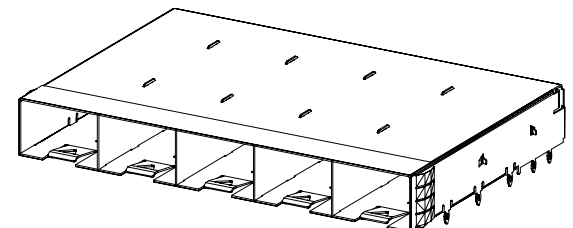
CHASSIS GROUND



LARGE PIN



REVISION AND CHANGE EFFECTIVITY DATE				
LR.	ECN	DESCRIPTION	DATE	APP'D.



ORDERING INFO:

SP7054-5-085-X

SERIES

- PLATING OPTIONS:**
- R FOR 100µIN MATTE TIN OVER 50µIN NICKEL
RoHS COMPLIANT
NOT INTENDED FOR REFLOW - WAVE SOLDER ONLY
WAVE TEMP 260°C FOR 6 SEC. MAX
 - G FOR FLASH GOLD OVER 50µIN NICKEL
RoHS COMPLIANT
REFLOW COMPATIBLE - MAX REFLOW TEMP. 260°C
 - N FOR 60µIN NICKEL
RoHS COMPLIANT
REFLOW COMPATIBLE - MAX REFLOW TEMP. 260°C

DO NOT SCALE DRAWING.

NOTES:

- 1) OPERATING AND STORAGE TEMPERATURE: -40°C TO +160°C
- 2) CAGE MATERIAL: 0.019" THICK BRASS ALLOY, C2680 - FULL HARD
- 3) CAGE IS SOLDERED AT SEVERAL LOCATIONS
- 4) GASKET: 0.002" THICK BERYLLIUM COPPER
- 5) GASKET IS SPOT WELDED INTO CAGE
- 6) PLATING SEE PLATING OPTIONS
- 7) ENTIRE CAGE IS LEAD FREE AND RoHS COMPLIANT - INCLUDING SOLDER

EXPERIMENTAL NO:		DIVISION ASSIGNED: dataMate Division	
TOLERANCE UNLESS OTHERWISE SPECIFIED	MATERIAL:	DRAWN BY: A. PIRILLIS	DATE: 03/25/09
METRIC ±	SEE NOTES	CHECKED BY: J. NOWAK	03/25/09
INCHES ±	SEE NOTES	ENGR. APPROVAL: B. SKEPNEK	03/25/09
FRACTION ±	DEC. XX ± .010	APPROVED BY: A. CHIAPPETTA	03/25/09
ANGLES ±	XXX ± .005	PART NO. CLASSIFICATION:	
TOOLING DWG □		SIZE: C	CODE IDENT.:
PART DWG □		DWG. NUMBER:	SP7054-5-085-X
BREAK SHARP EDGES		SCALE:	
REMOVE ALL BURRS		Rev.:	1 OF 2



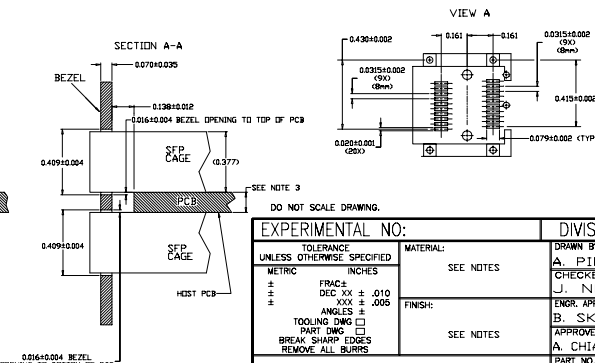
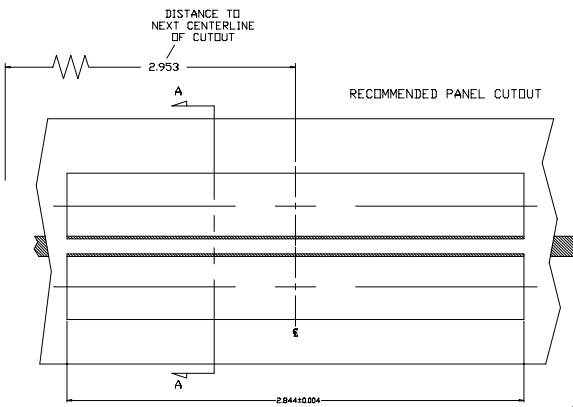
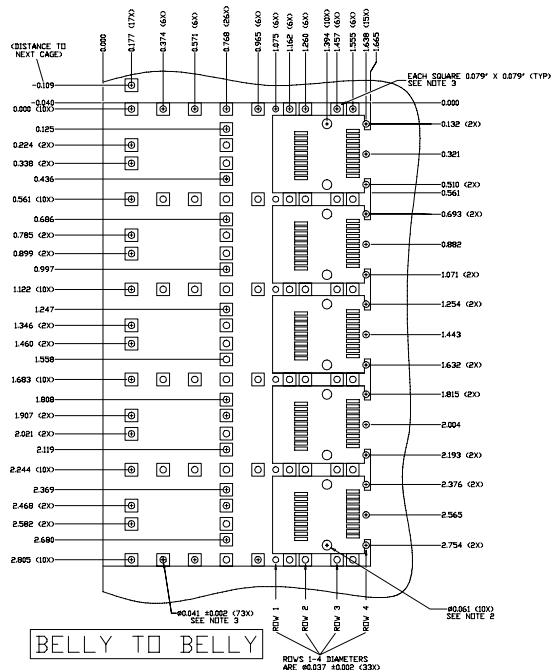
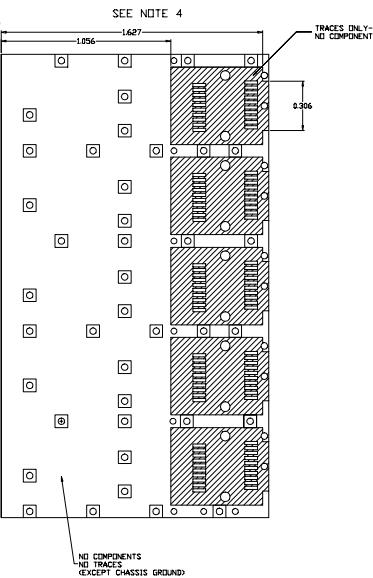
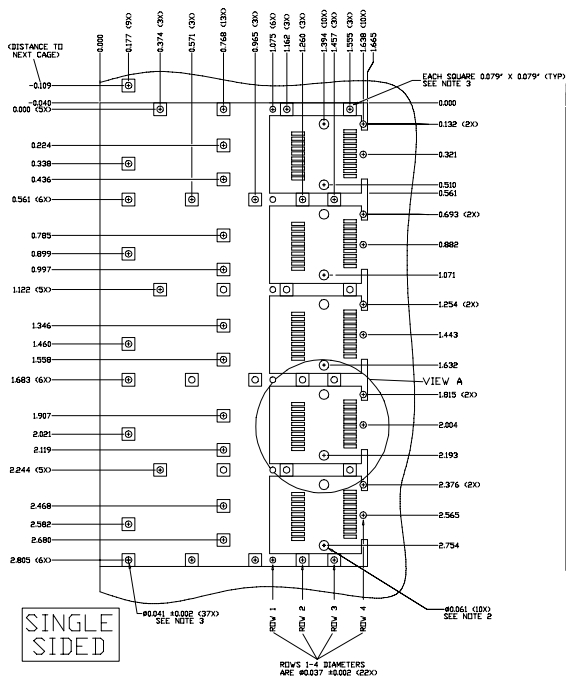
TITLE: SFP+ EMI 5 PORT CAGE WITH SHORT PRESS FIT PINS NO TOP TABS

THE INFORMATION DISCLOSED IN THIS DOCUMENT IS PROPRIETARY TO METHODE ELECTRONICS, INC. AND MAY NOT BE USED FOR MANUFACTURE OR ANY OTHER PURPOSE WITHOUT THE WRITTEN CONSENT OF METHODE. DRILLS SUBJECT TO CHANGE AS THEY MAY VARY WITH RESPECT TO PRODUCT VARIATIONS.

RECOMMENDED FOOTPRINT

REVISION AND CHANGE EFFECTIVITY DATE

LT#	ECN	DESCRIPTION	DATE	APP'D.



- NOTES:
- 1) DIMENSIONS ARE TO CENTER OF HOLES OR PADS
 - 2) THRU HOLES, PLATING OPTIONAL
 - 3) PADS AND VIAS ARE CHASSIS GROUND
 - 4)
 - NO TRACES
 - NO COMPONENTS (EXCEPT CHASSIS GROUND)
 - 5) MINIMUM PCB THICKNESS:
 - 0.053" FOR BELLY TO BELLY APPLICATION
 - 0.062" FOR ONE SIDE PCB APPLICATION

EXPERIMENTAL NO:		DIVISION ASSIGNED: dataMate Division	
TOLERANCE UNLESS OTHERWISE SPECIFIED	MATERIAL: SEE NOTES	DRAWN BY: A. PIRLLIS	DATE: 03/25/09
METRIC INCHES	FINISH: SEE NOTES	CHECKED BY: J. NOWAK	DATE: 03/25/09
FRACTIONAL DEC. XX ± .010		ENGR. APPROVAL: B. SKEPNEK	DATE: 03/25/09
± .005		APPROVED BY: A. CHIAPPETTA	DATE: 03/25/09
ANGLES ±		PART NO. CLASSIFICATION:	
TOOLING DWG <input type="checkbox"/>			
PART DWG <input type="checkbox"/>			
BREAK SHARP EDGES REMOVE ALL BURRS			
TITLE: SFP+ EMI 5 PORT CAGE WITH SHORT PRESS FIT PINS NO TOP TABS			
SIZE: C	CODE IDENT.	DWG. NUMBER: SP7054-5-085-X	Rev.
SCALE:			SHI.2 OF 2

THE INFORMATION DISCLOSED IN THIS DOCUMENT IS PROPRIETARY TO METHODE ELECTRONICS, INC. AND MAY NOT BE USED FOR MANUFACTURE OR ANY OTHER PURPOSE WITHOUT THE WRITTEN CONSENT OF METHODE. DRILLS SUBJECT TO CHANGE AS THEY MAY VARY WITH RESPECT TO PRODUCT IMPROVEMENT.