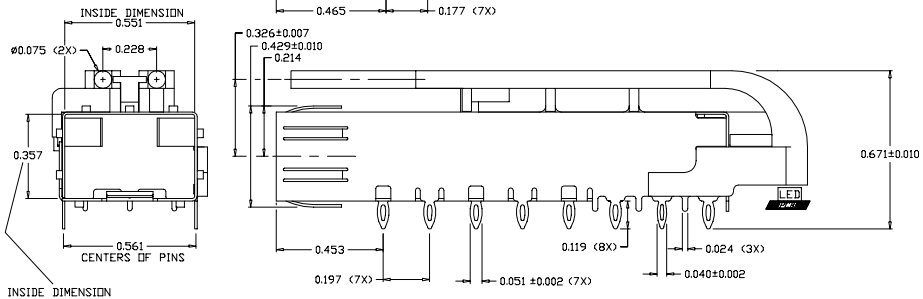
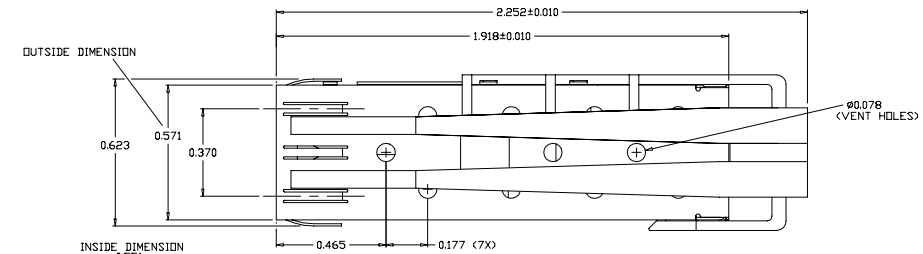
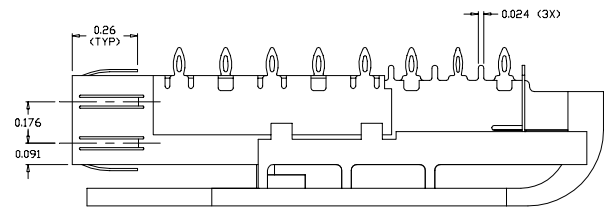
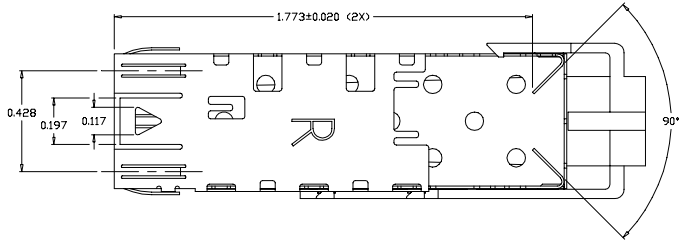
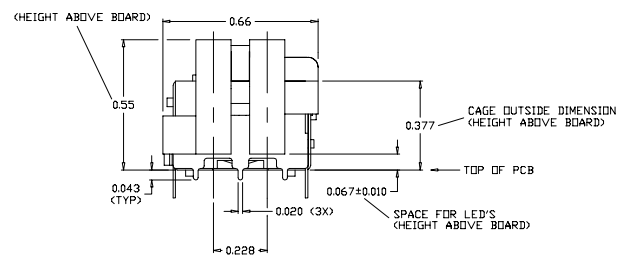


REVISION AND CHANGE EFFECTIVITY DATE				
LTR.	ECN	DESCRIPTION	DATE	APP'D.
A	ECIS08	ADDED TAB DIMENSIONS	08/30/06	AP
B	ECIS27	ALL PLATING OPTIONS RoHS, INC. TOL. ON PCB ADDED OPERATING AND STORAGE TEMP AND LED NOTES	03/23/07	AP



- NOTES:**
- 1) MATERIAL: 0.010" THICK BRASS ALLOY; C2680 - FULL HARD
 - 2) PLATING: SEE PLATING OPTIONS
 - 3) CAGE IS SOLDERED AT SEAM AT 5 LOCATIONS
 - 4) LIGHTPIPE MATERIAL: CLEAR POLYCARBONATE
 - 5) CAGE IS STAMPED "R" FOR RoHS COMPLIANCE
 - 6) MAXIMUM LED HEIGHT: 0.057"
 - 7) OPERATING AND STORAGE TEMPERATURE: -40°C TO +130°C



ORDERING INFO:

DM7034-L-X
SERIES

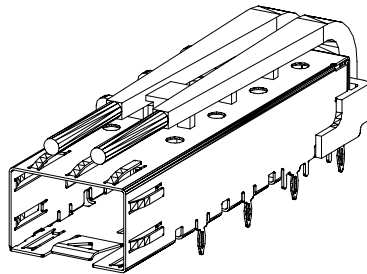
PLATING OPTIONS:

- R FOR 100μIN MATTE TIN OVER 50μIN NICKEL
RoHS COMPLIANT
- G FOR FLASH GOLD OVER 50μIN NICKEL
RoHS COMPLIANT
- N FOR 100μIN NICKEL
RoHS COMPLIANT
- WITH LIGHTPIPE

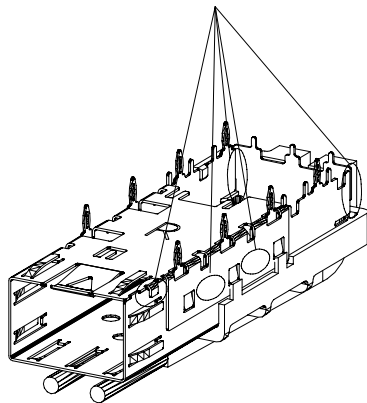


DO NOT SCALE DRAWING.

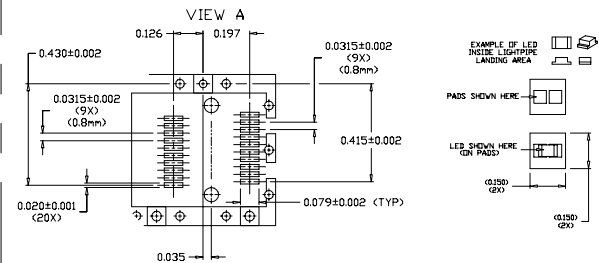
EXPERIMENTAL NO:		DIVISION ASSIGNED: dataMATE Division	
TOLERANCE UNLESS OTHERWISE SPECIFIED METRIC INCHES ± ± DEC. XX ± .010 XXX ± .005 ANGLES ± TOOLING DWG □ PART DWG □ BREAK SHARP EDGES REMOVE ALL BURRS		MATERIAL: SEE NOTES FINISH: DRAWN BY: A. PIRILLIS 06/24/05 CHECKED BY: B. SKEPNEY 06/24/05 ENGR. APPROVAL: J. NOWAK 06/24/05 APPROVED BY: A. CHIAPPETTA 06/24/05 PART NO. CLASSIFICATION:	
TITLE: SFP CAGE - ONE PIECE WITH PRESS FIT PINS AND LIGHTPIPE SIZE: C CODE IDENT.: SCALE:		TITLE: SFP CAGE - ONE PIECE WITH PRESS FIT PINS AND LIGHTPIPE DWG. NUMBER: DM7034-L-X Rev. B SHEET: 1 OF 2	



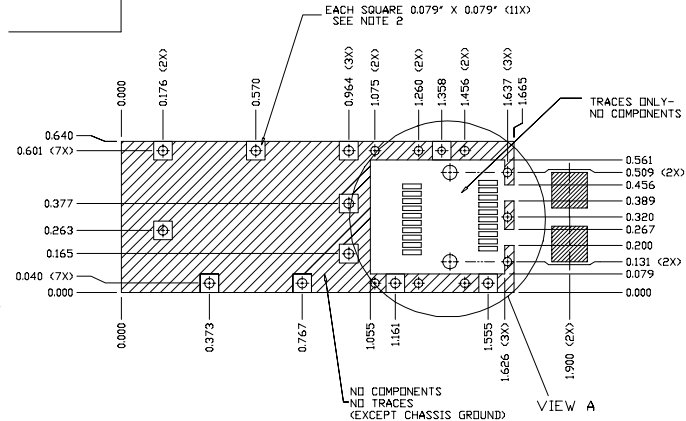
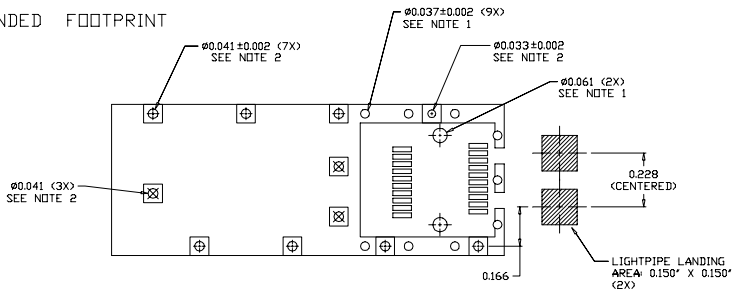
LOCATION OF SOLDER JOINTS



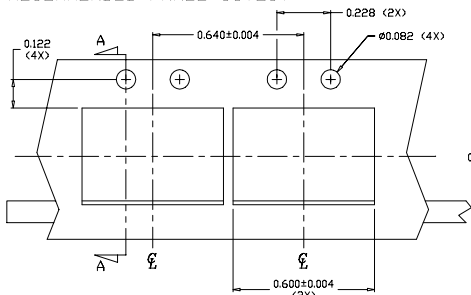
REVISION AND CHANGE EFFECTIVITY DATE				
LTR.	ECN	DESCRIPTION	DATE	APP'D.
A	ECIS08	ADDED TAB DIMENSIONS	08/30/06	AP
B	ECIS27	ALL PLATING OPTIONS ROHS, INC. TOL. ON PCB ADDED OPERATING AND STORAGE TEMP AND LED NOTES	03/23/07	AP



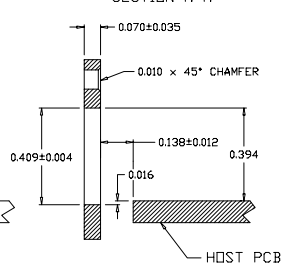
RECOMMENDED FOOTPRINT



RECOMMENDED PANEL CUTOUT



SECTION A-A



NOTES:

- 1) THRU HOLES, PLATING OPTIONAL
- 2) PADS AND VIAS ARE CHASSIS GROUND, 11 PLACES



DO NOT SCALE DRAWING.		EXPERIMENTAL NO:		DIVISION ASSIGNED: dataMate Division	
TOLERANCE UNLESS OTHERWISE SPECIFIED	MATERIAL:	DRAWN BY:	DATE:		
METRIC INCHES	SEE NOTES	A. PIRLLIS	06/24/05		
FRACTIONS DEC XX ± .010 XXX ± .005 ANGLES ±	FINISH:	CHECKED BY:	06/24/05		
TOOLING DWG PART DWG BREAK SHARP EDGES REMOVE ALL BURRS		B. SKEPNEK	06/24/05		
THE INFORMATION DISCLOSED IN THIS DOCUMENT IS PROPRIETARY TO METHODE ELECTRONICS, INC. AND MAY NOT BE USED FOR MANUFACTURE OR ANY OTHER PURPOSE WITHOUT THE WRITTEN CONSENT OF METHODE. DETAILS SUBJECT TO CHANGE AS THEY MAY CHANGE WITH RESPECT TO PRODUCT IMPROVEMENT.		ENGR. APPROVAL:	DATE:	TITLE: SFP CAGE - ONE PIECE WITH PRESS FIT PINS AND LIGHTPIPE	
		J. NOWAK	06/24/05	SIZE: C CODE IDENT. DWG. NUMBER Rev. B	
		A. CHIAPPETTA	06/24/05	DM7034-L-X	
		PART NO. CLASSIFICATION:		SCALE: SHI. 2 OF 2	