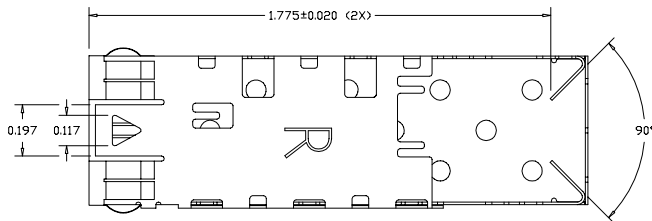
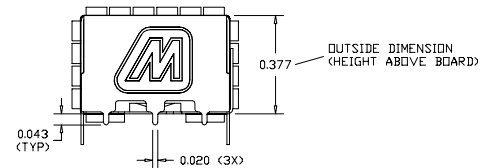
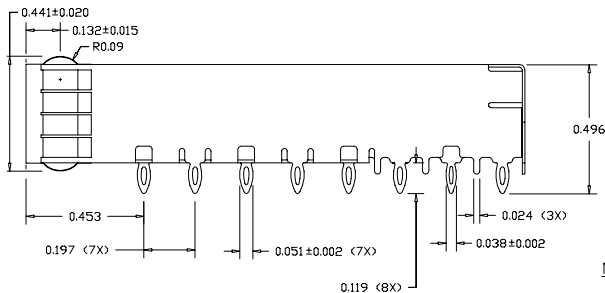
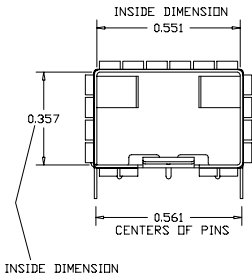
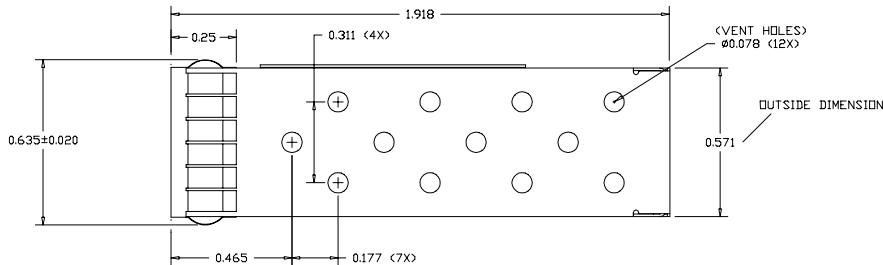


LTR.	ECN	DESCRIPTION	DATE	APP'D.



NOTES:

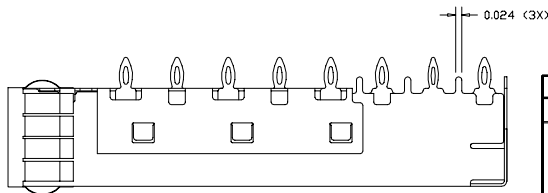
- 1) OPERATING AND STORAGE TEMPERATURE: -40°C TO +160°C
- 2) CAGE MATERIAL: 0.010" THICK BRASS ALLOY; C2680 - FULL HARD
- 3) PLATING: SEE PLATING OPTIONS
- 4) CAGE IS SOLDERED AT SEAM AT 5 LOCATIONS
- 5) CAGE IS STAMPED "R" FOR RoHS COMPLIANCE
- 6) GASKET: 0.002" THICK BERYLLIUM COPPER WITH NICKEL PLATING
- 7) GASKET IS SPOT WELDED ONTO CAGE

ORDERING INFO:

DM7054-X
SERIES

PLATING OPTIONS:
(ALL ARE RoHS COMPLIANT)

- R FOR 100µIN MATTE TIN OVER 50µIN NICKEL
NOT INTENDED FOR REFLOW
WAVE SOLDER ONLY - WAVE TEMP. 260°C FOR 6 SEC. MAX
- G FOR FLASH GOLD OVER 50µIN NICKEL
REFLOW COMPATIBLE - MAX REFLOW TEMP. 260°C
- N FOR 100µIN NICKEL
REFLOW COMPATIBLE - MAX REFLOW TEMP. 260°C

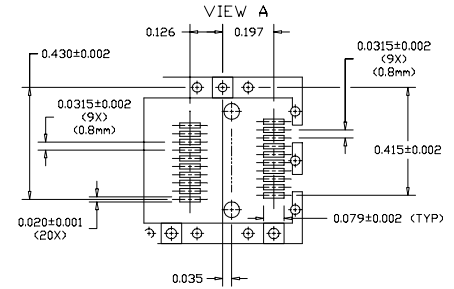
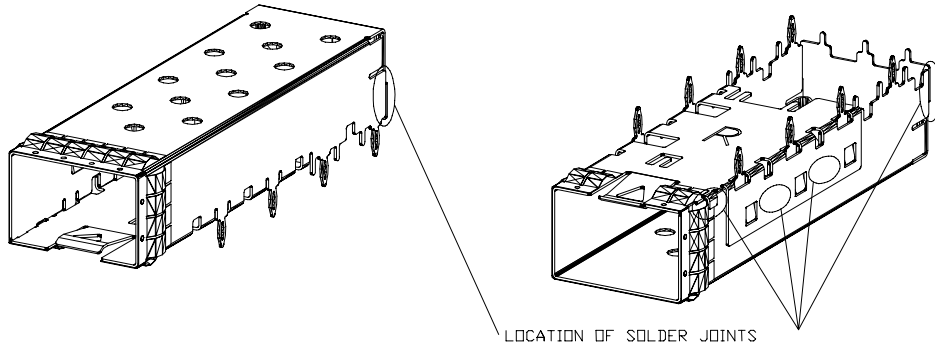


DO NOT SCALE DRAWING.

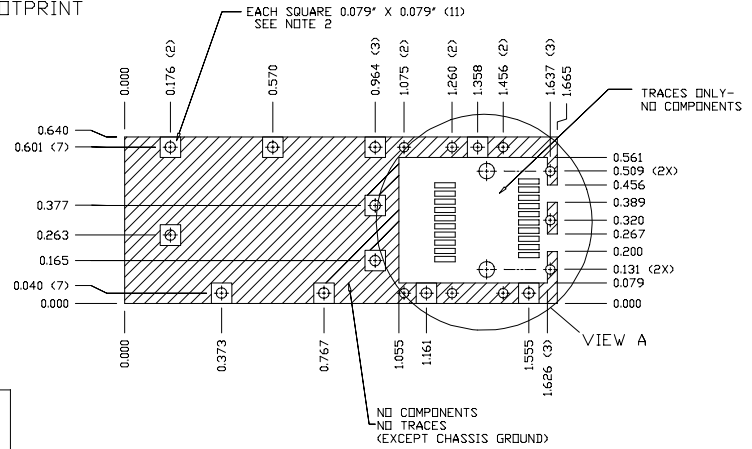
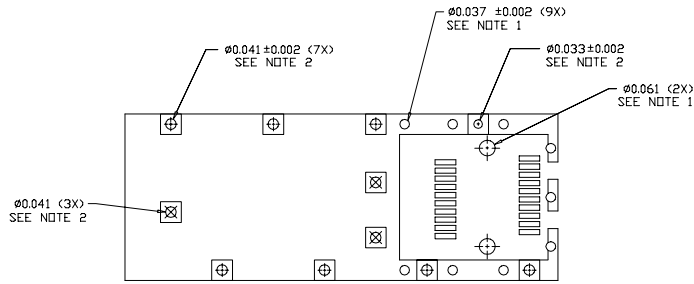
EXPERIMENTAL NO:		DIVISION ASSIGNED:	
TOLERANCE UNLESS OTHERWISE SPECIFIED		MATERIAL:	
METRIC INCHES		SEE NOTES	
±	FRACTION	DRAWN BY: A. PIRILLIS 09/14/07	
±	DEC. XX ± .010	CHECKED BY: B. SKEPNEK 09/14/07	
±	XXX ± .005	ENGR. APPROVAL: J. NOWAK 09/14/07	
±	ANGLES ±	APPROVED BY: A. CHIAPPETTA 09/14/07	
±	TOOLING DWG □	PART NO. CLASSIFICATION:	
±	PART DWG □	DATE: 09/14/07	
±	BREAK SHARP EDGES REMOVE ALL BURRS	TITLE: SFP+ CAGE - ONE PIECE (IMPROVED) WITH GASKET PRESS FIT PINS	
THE INFORMATION DISCLOSED IN THIS DOCUMENT IS PROPRIETARY TO METHODE ELECTRONICS, INC. AND MAY NOT BE USED FOR MANUFACTURE OR ANY OTHER PURPOSE WITHOUT THE WRITTEN CONSENT OF METHODE. DETAILS SUBJECT TO CHANGE AS THEY MAY CHANGE WITH RESPECT TO PRODUCT IMPROVEMENT.		SIZE: C	CODE IDENT.:
		DWG. NUMBER: DM7054-X	Rev.:
		SCALE:	SHIT. 1 OF 2



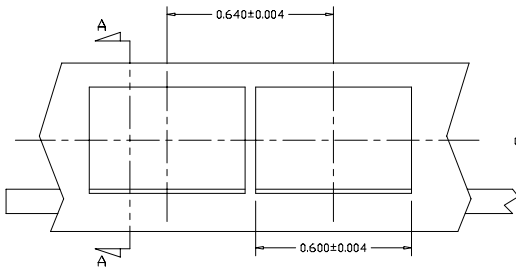
REVISION AND CHANGE EFFECTIVITY DATE				
LTR.	ECN	DESCRIPTION	DATE	APP'D.



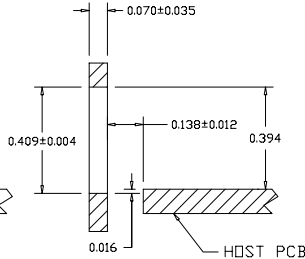
RECOMMENDED FOOTPRINT



RECOMMENDED PANEL CUTOUT



SECTION A-A



NOTES:

- 1) THRU HOLES, PLATING OPTIONAL
- 2) PADS AND VIAS ARE CHASSIS GROUND, 11 PLACES



DO NOT SCALE DRAWING.		EXPERIMENTAL NO:		DIVISION ASSIGNED: dataMATE Division	
TOLERANCE UNLESS OTHERWISE SPECIFIED		MATERIAL: SEE NOTES		DRAWN BY: A. PIRLLIS 09/14/07	
METRIC INCHES		FINISH:		CHECKED BY: B. SKEPNEK 09/14/07	
FRACTIONS DEC. XX ± .010 XXX ± .005 ANGLES ±		TOOLING DWG PART DWG BREAK SHARP EDGES REMOVE ALL BURRS		ENGR. APPROVAL: J. NOWAK 09/14/07	
				APPROVED BY: A. CHIAPPETTA 09/14/07	
				PART NO. CLASSIFICATION:	
				TITLE: SFP+ CAGE - ONE PIECE (IMPROVED) WITH GASKET PRESS FIT PINS	
				SIZE: C	
				CODE IDENT. DWG. NUMBER: DM7054-X	
				Rev. 2	
				SCALE: SHI.2 OF 2	