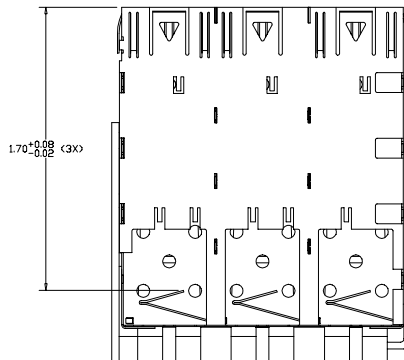
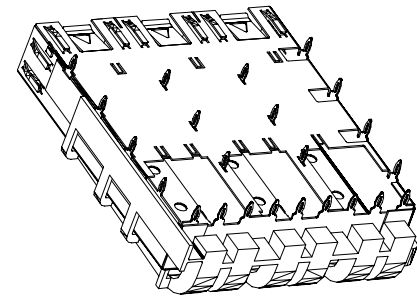
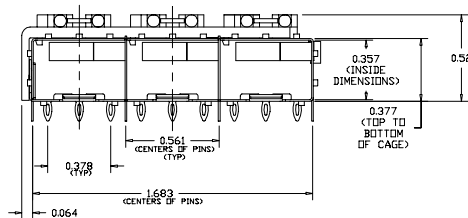
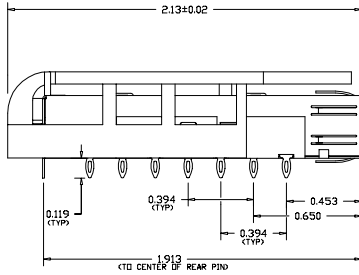
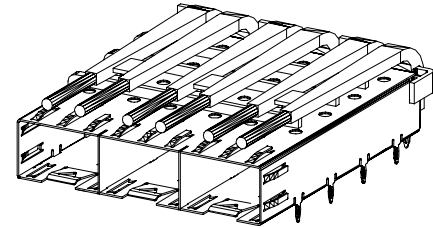
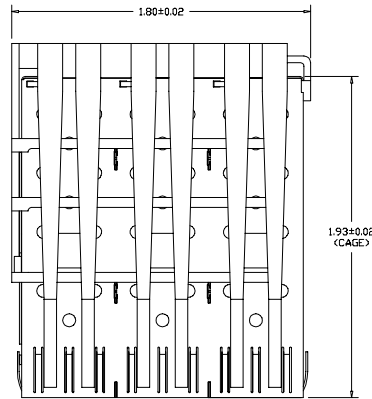
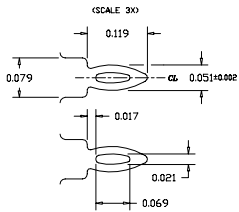


LTR.	ECN	DESCRIPTION	DATE	APP'D.
A	ECI536	UPDATED PLATING OPTIONS, FOOTPRINT DETAIL A	07/16/07	AP

PRESS FIT PIN DETAIL (23X)



ORDERING INFO:

DM7042-3-L-X

SERIES

3 PORTS

LIGHTPIPES

PLATING OPTIONS:

- R FOR 100µIN MATTE TIN OVER 50µIN NICKEL
NOT INTENDED FOR REFLOW
WAVE SOLDER ONLY - WAVE TEMP. 260°C FOR 6 SEC. MAX
RoHS COMPLIANT
- G FOR FLASH GOLD OVER 50µIN NICKEL
NOT INTENDED FOR REFLOW
WAVE SOLDER ONLY - WAVE TEMP. 260°C FOR 6 SEC. MAX
RoHS COMPLIANT
- N FOR 100µIN NICKEL
NOT INTENDED FOR REFLOW
WAVE SOLDER ONLY - WAVE TEMP. 260°C FOR 6 SEC. MAX
RoHS COMPLIANT



NOTES:

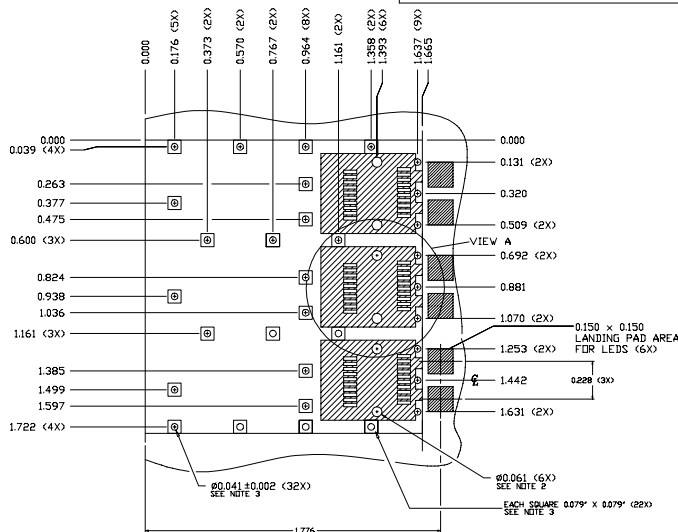
- 1) CAGE MATERIAL: 0.010" THICK BRASS ALLOY; C2680 - FULL HARD
- 2) PLATING: SEE ORDERING INFO
- 3) LIGHTPIPE MATERIAL: 940A LEXAN, 94V-0 RATED, CLEAR
- 4) CAGE IS SOLDERED AT SEAMS (LEAD FREE SOLDER)
- 5) OPERATING AND STORAGE TEMPERATURE: -40°C TO +125°C
- 6) TEMPERATURE FROM WAVE SOLDER NOT TO EXCEED 125°C AT LIGHTPIPE

DO NOT SCALE DRAWING.

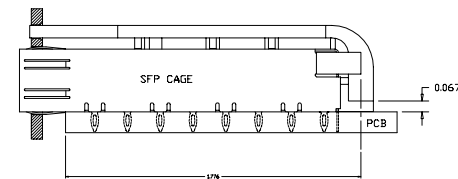
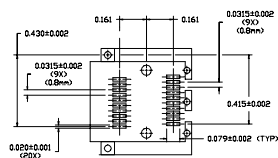
EXPERIMENTAL NO:		DIVISION ASSIGNED:	
TOLERANCE UNLESS OTHERWISE SPECIFIED	MATERIAL:	DRAWN BY:	DATE:
METRIC ±	SEE NOTES	A. PIRILLIS	06/16/05
INCHES ±	SEE NOTES	CHECKED BY:	
FRACTIONS ±		J. NOWAK	06/16/05
DEC. XX ± .010	FINISH:	ENGR. APPROVAL:	
XXX ± .005	SEE NOTES	B. SKEPNEK	06/16/05
ANGLES ±		APPROVED BY:	
TOOLING DWG □		A. CHIAPPETTA	06/16/05
PART DWG □			
BREAK SHARP EDGES			
REMOVE ALL BURRS			
THE INFORMATION DISCLOSED IN THIS DOCUMENT IS PROPRIETARY TO METHODE ELECTRONICS, INC. AND MAY NOT BE USED FOR MANUFACTURE OR ANY OTHER PURPOSE WITHOUT THE WRITTEN CONSENT OF METHODE. DRILLS SUBJECT TO CHANGE AS THEY MAY CHANGE WITH RESPECT TO PRODUCT IMPROVEMENT.		PART NO. CLASSIFICATION:	
TITLE		SIZE	CODE IDENT.
SFP EMI 3 PORT CAGE WITH PRESS FIT PINS AND LIGHTPIPES		C	
DWG. NUMBER		Rev.	
DM7042-3-L-X		A	
SCALE:		SHT. 1 OF 2	

RECOMMENDED FOOTPRINT

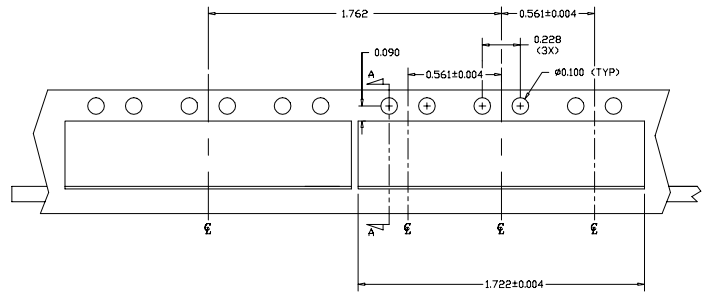
REVISION AND CHANGE EFFECTIVITY DATE				
LTR.	ECN	DESCRIPTION	DATE	APP'D.
A	ECI536	UPDATED PLATING OPTIONS, FOOTPRINT DETAIL A	07/16/07	AP



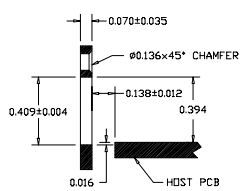
VIEW A (TYP)

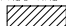
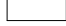


RECOMMENDED PANEL CUTOUT



SECTION A-A



- NOTES:
- 1) DIMENSIONS ARE TO CENTER OF HOLES
 - 2) THRU HOLES, PLATING OPTIONAL
 - 3) PADS AND VIAS ARE CHASSIS GROUND, 42 PLACES
- 4)  TRACES ONLY
NO COMPONENTS
-  NO TRACES
NO COMPONENTS
(EXCEPT CHASSIS GROUND)

DO NOT SCALE DRAWING.

EXPERIMENTAL NO:		DIVISION ASSIGNED: dataMate Division	
TOLERANCE UNLESS OTHERWISE SPECIFIED METRIC ± DEC. XX ± .010 XXX ± .005 ANGLES ± TOOLING DWG □ PART DWG □ BREAK SHARP EDGES REMOVE ALL BURRS	MATERIAL: SEE NOTES FINISH: SEE NOTES	DRAWN BY: A. PIRILLIS CHECKED BY: J. NOWAK ENGR. APPROVAL: B. SKEPNEK APPROVED BY: A. CHIAPPETTA	DATE: 06/16/05 06/16/05 06/16/05 06/16/05
THE INFORMATION DISCLOSED IN THIS DOCUMENT IS PROPRIETARY TO METHODE ELECTRONICS, INC. AND MAY NOT BE USED FOR MANUFACTURE OR ANY OTHER PURPOSE WITHOUT THE WRITTEN CONSENT OF METHODE. DRILLS SUBJECT TO CHANGE AS THEY MAY CHANGE WITH RESPECT TO PRODUCT IMPROVEMENT.		TITLE: SFP EMI 3 PORT CAGE WITH PRESS FIT PINS AND LIGHTPIPES SIZE: C CODE IDENT.: SCALE:	PART NO. CLASSIFICATION: DM7042-3-L-X Rev. A SHI.2 OF 2

