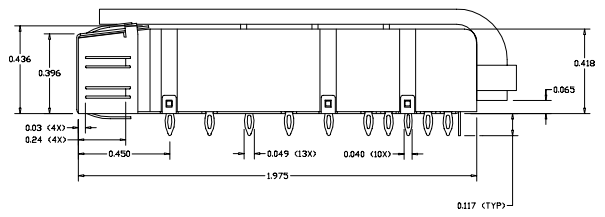
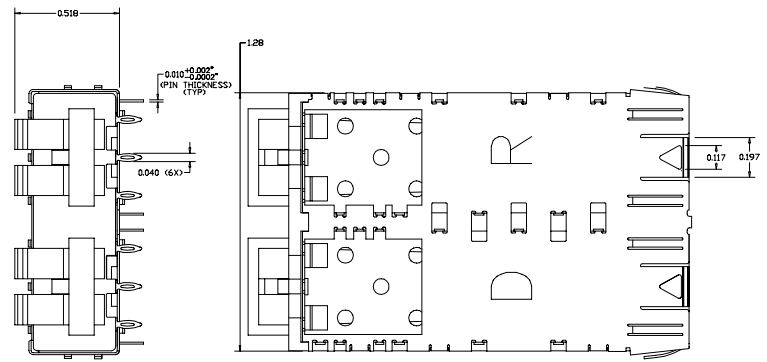
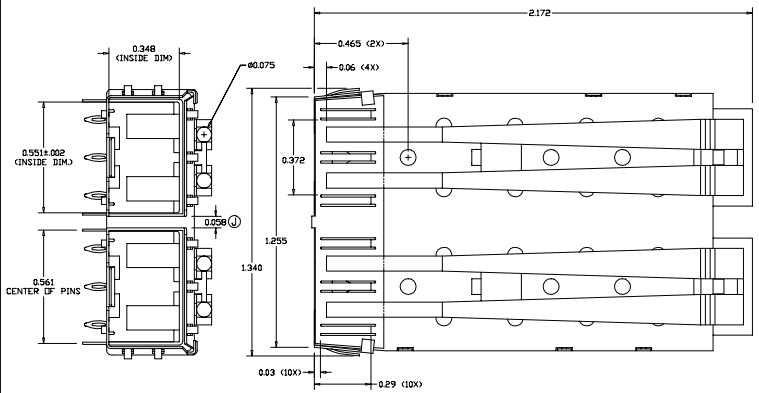


PREVIOUS REVISIONS			
1	ISSUED DRAWING	08/27/02	AP
2	ISSUED DRAWING	08/27/02	AP
3	ISSUED DRAWING	10/24/04	AP
4	ISSUED DRAWING	10/24/04	AP
5	ISSUED DRAWING	10/24/04	AP
6	ISSUED DRAWING	10/24/04	AP
7	ISSUED DRAWING	10/24/04	AP
8	ISSUED DRAWING	10/24/04	AP
9	ISSUED DRAWING	10/24/04	AP
10	ISSUED DRAWING	10/24/04	AP
11	ISSUED DRAWING	10/24/04	AP
12	ISSUED DRAWING	10/24/04	AP
13	ISSUED DRAWING	10/24/04	AP
14	ISSUED DRAWING	10/24/04	AP
15	ISSUED DRAWING	10/24/04	AP
16	ISSUED DRAWING	10/24/04	AP
17	ISSUED DRAWING	10/24/04	AP
18	ISSUED DRAWING	10/24/04	AP
19	ISSUED DRAWING	10/24/04	AP
20	ISSUED DRAWING	10/24/04	AP
21	ISSUED DRAWING	10/24/04	AP
22	ISSUED DRAWING	10/24/04	AP
23	ISSUED DRAWING	10/24/04	AP
24	ISSUED DRAWING	10/24/04	AP
25	ISSUED DRAWING	10/24/04	AP
26	ISSUED DRAWING	10/24/04	AP
27	ISSUED DRAWING	10/24/04	AP
28	ISSUED DRAWING	10/24/04	AP
29	ISSUED DRAWING	10/24/04	AP
30	ISSUED DRAWING	10/24/04	AP
31	ISSUED DRAWING	10/24/04	AP
32	ISSUED DRAWING	10/24/04	AP
33	ISSUED DRAWING	10/24/04	AP
34	ISSUED DRAWING	10/24/04	AP
35	ISSUED DRAWING	10/24/04	AP
36	ISSUED DRAWING	10/24/04	AP
37	ISSUED DRAWING	10/24/04	AP
38	ISSUED DRAWING	10/24/04	AP
39	ISSUED DRAWING	10/24/04	AP
40	ISSUED DRAWING	10/24/04	AP
41	ISSUED DRAWING	10/24/04	AP
42	ISSUED DRAWING	10/24/04	AP
43	ISSUED DRAWING	10/24/04	AP
44	ISSUED DRAWING	10/24/04	AP
45	ISSUED DRAWING	10/24/04	AP
46	ISSUED DRAWING	10/24/04	AP
47	ISSUED DRAWING	10/24/04	AP
48	ISSUED DRAWING	10/24/04	AP
49	ISSUED DRAWING	10/24/04	AP
50	ISSUED DRAWING	10/24/04	AP
51	ISSUED DRAWING	10/24/04	AP
52	ISSUED DRAWING	10/24/04	AP
53	ISSUED DRAWING	10/24/04	AP
54	ISSUED DRAWING	10/24/04	AP
55	ISSUED DRAWING	10/24/04	AP
56	ISSUED DRAWING	10/24/04	AP
57	ISSUED DRAWING	10/24/04	AP
58	ISSUED DRAWING	10/24/04	AP
59	ISSUED DRAWING	10/24/04	AP
60	ISSUED DRAWING	10/24/04	AP
61	ISSUED DRAWING	10/24/04	AP
62	ISSUED DRAWING	10/24/04	AP
63	ISSUED DRAWING	10/24/04	AP
64	ISSUED DRAWING	10/24/04	AP
65	ISSUED DRAWING	10/24/04	AP
66	ISSUED DRAWING	10/24/04	AP
67	ISSUED DRAWING	10/24/04	AP
68	ISSUED DRAWING	10/24/04	AP
69	ISSUED DRAWING	10/24/04	AP
70	ISSUED DRAWING	10/24/04	AP
71	ISSUED DRAWING	10/24/04	AP
72	ISSUED DRAWING	10/24/04	AP
73	ISSUED DRAWING	10/24/04	AP
74	ISSUED DRAWING	10/24/04	AP
75	ISSUED DRAWING	10/24/04	AP
76	ISSUED DRAWING	10/24/04	AP
77	ISSUED DRAWING	10/24/04	AP
78	ISSUED DRAWING	10/24/04	AP
79	ISSUED DRAWING	10/24/04	AP
80	ISSUED DRAWING	10/24/04	AP
81	ISSUED DRAWING	10/24/04	AP
82	ISSUED DRAWING	10/24/04	AP
83	ISSUED DRAWING	10/24/04	AP
84	ISSUED DRAWING	10/24/04	AP
85	ISSUED DRAWING	10/24/04	AP
86	ISSUED DRAWING	10/24/04	AP
87	ISSUED DRAWING	10/24/04	AP
88	ISSUED DRAWING	10/24/04	AP
89	ISSUED DRAWING	10/24/04	AP
90	ISSUED DRAWING	10/24/04	AP
91	ISSUED DRAWING	10/24/04	AP
92	ISSUED DRAWING	10/24/04	AP
93	ISSUED DRAWING	10/24/04	AP
94	ISSUED DRAWING	10/24/04	AP
95	ISSUED DRAWING	10/24/04	AP
96	ISSUED DRAWING	10/24/04	AP
97	ISSUED DRAWING	10/24/04	AP
98	ISSUED DRAWING	10/24/04	AP
99	ISSUED DRAWING	10/24/04	AP
100	ISSUED DRAWING	10/24/04	AP

REVISION AND CHANGE EFFECTIVITY DATE				
LTR.	ECN	DESCRIPTION	DATE	APP'D.
J	EC1539	DECREASED WIDTH ON CENTER DIMMER ON STAMPED PIECE	07/18/07	AP



ORDERING INFO:
 DM7040-2-X-Y
 SERIES

NUMBER OF PORTS
 L - WITH LIGHT PIPES INSTALLED (2 PAIRS)
 BLANK (OMIT) - WITHOUT LIGHTPIPES

PLATING OPTIONS:
 -R FOR 100µIN MATTE TIN OVER 50µIN NICKEL
 NOT INTENDED FOR REFLOW
 WAVE SOLDER ONLY - WAVE TEMP. 260°C FOR 6 SEC. MAX
 RoHS COMPLIANT
 -G FOR FLASH GOLD OVER 50µIN NICKEL
 WITH LIGHTPIPE; NOT INTENDED FOR REFLOW
 WAVE SOLDER ONLY - WAVE TEMP. 260°C FOR 6 SEC. MAX
 WITHOUT LIGHTPIPE; CAGE IS REFLOW COMPATIBLE
 MAX REFLOW TEMP. 260°C
 RoHS COMPLIANT
 -N FOR 100µIN NICKEL
 WITH LIGHTPIPE; NOT INTENDED FOR REFLOW
 WAVE SOLDER ONLY - WAVE TEMP. 260°C FOR 6 SEC. MAX
 WITHOUT LIGHTPIPE; CAGE IS REFLOW COMPATIBLE
 MAX REFLOW TEMP. 260°C
 RoHS COMPLIANT

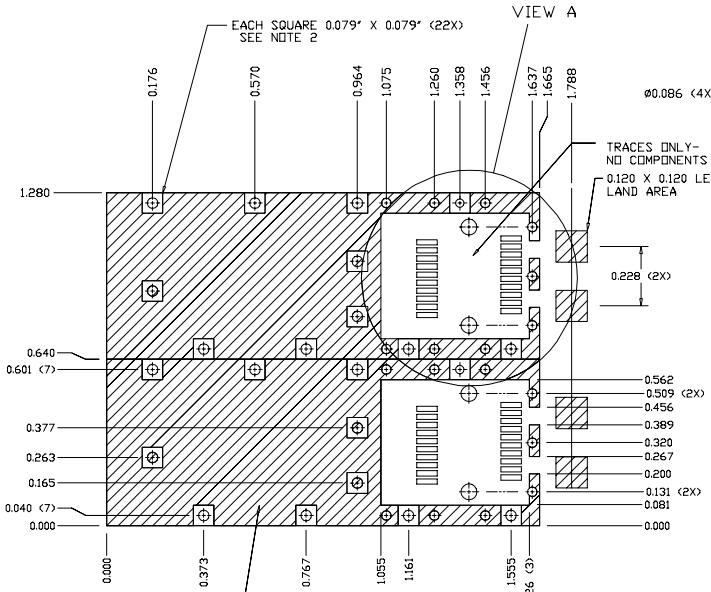
MATERIAL AND FINISH:

- 1) HOUSING: ZINC DIE CAST - SEE ORDERING INFO FOR PLATING OPTIONS
- 2) BOTTOM SHIELD: .010" THICK BRASS, FULL HARD. - SEE ORDERING INFO FOR PLATING OPTIONS
TOLERANCE: +0.002"/-0.0002" (INCLUDING PINS AND GROUNDING TABS)
- 3) LIGHT PIPE: CLEAR POLYCARBONATE - NOT INTENDED FOR REFLOW - WAVE SOLDER ONLY
- 4) SHOWN WITH LIGHTPIPES
- 5) CAGE IS STAMPED 'R' FOR RoHS COMPLIANCE
- 6) OPERATING AND STORAGE TEMPERATURE: -40°C TO +160°C W/OUT LIGHTPIPE, +125°C WITH LIGHTPIPE
- 7) TEMPERATURE FROM WAVE SOLDER NOT TO EXCEED 125°C AT LIGHTPIPE

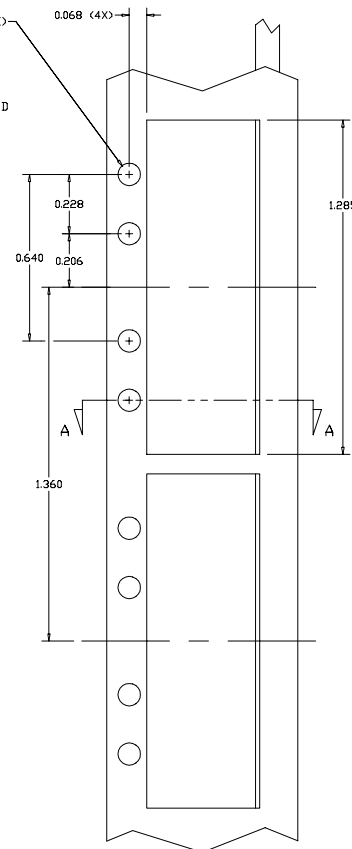
EXPERIMENTAL NO:		DIVISION ASSIGNED:	
DO NOT SCALE DRAWING.		dataMate Division	
TOLERANCE UNLESS OTHERWISE SPECIFIED		DRAWN BY: B. SKEPNEK 12/13/02	
MATERIAL: SEE NOTES		CHECKED BY: T. LEGITTIMO 12/13/02	
METRIC INCHES		ENGR. APPROVAL: A. PIRILLIS 12/13/02	
FRACTIONS: DEC ± .010		APPROVED BY: J. DALY 12/13/02	
XXX ± .005		PART NO. CLASSIFICATION:	
ANGLES ±		TITLE: SFP EMI CAGE 2 PORT MODULE	
TOOLING DWG □		SIZE: C	
PART DWG □		CODE IDENT.	
BREAK SHARP EDGES REMOVE ALL BURRS		DWG. NUMBER: DM7040-2-X	
THE INFORMATION DISCLOSED IN THIS DOCUMENT IS PROPRIETARY TO METHODE ELECTRONICS, INC. AND MAY NOT BE USED FOR MANUFACTURE OR ANY OTHER PURPOSE WITHOUT THE WRITTEN CONSENT OF METHODE. DETAILS SUBJECT TO CHANGE AS THEY MAY CHANGE WITH RESPECT TO PRODUCT IMPROVEMENT.		Rev. J	
		SCALE:	
		SHT. 1 OF 2	



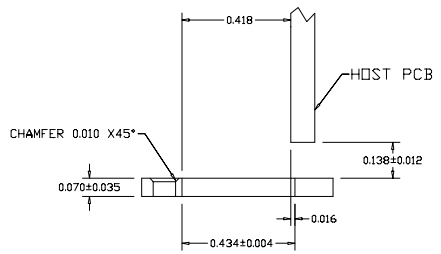
REVISION AND CHANGE EFFECTIVITY DATE				
LTR.	ECN	DESCRIPTION	DATE	APP'D.
J	EC1539	DECREASED WIDTH ON CENTER DIVDER ON STAMPED PIECE	07/18/07	AP



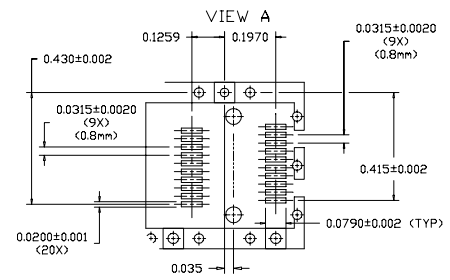
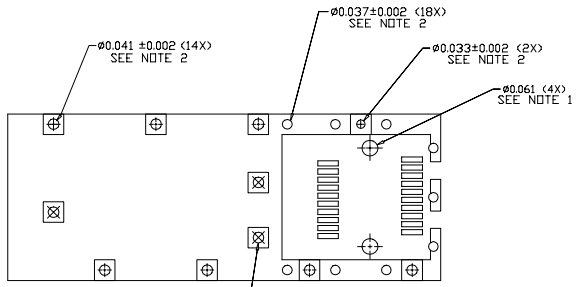
RECOMMENDED PANEL CUTOUT



SECTION A-A



NO COMPONENTS
NO TRACES
(EXCEPT CHASSIS GROUND)



- NOTES:
- 1) THRU HOLES, PLATING OPTIONAL
 - 2) PADS AND VIAS ARE CHASSIS GROUND, 40 PLACES

DO NOT SCALE DRAWING.		DIVISION ASSIGNED: dataMate Division	
EXPERIMENTAL NO:		DRAWN BY: B. SKEPNEK DATE: 12/13/02	
TOLERANCE UNLESS OTHERWISE SPECIFIED		MATERIAL: SEE NOTES	
METRIC: ±		CHECKED BY: T. LEGITTIMO 12/13/02	
INCHES: ±		ENGR. APPROVAL: A. PIRILLIS 12/13/02	
FRACS: DEC: XX ± .010		APPROVED BY: J. DALY 12/13/02	
XXX ± .005		PART NO. CLASSIFICATION:	
ANGLES: ±		TITLE: SFP EMI CAGE 2 PORT MODULE WITH LIGHTPIPES (RECOMMENDED FOOTPRINT)	
TOOLING DWG □		SIZE: C CODE IDENT. DWG. NUMBER: DM7040-2-X	
PART DWG □		Rev. J	
BREAK SHARP EDGES REMOVE ALL BURRS		SCALE: SHI. 2 OF 2	
<p>THE INFORMATION DISCLOSED IN THIS DOCUMENT IS PROPRIETARY TO METHODE ELECTRONICS, INC. AND MAY NOT BE USED FOR MANUFACTURE OR ANY OTHER PURPOSE WITHOUT THE WRITTEN CONSENT OF METHODE. CHANGES SUBJECT TO CHANGE AS THEY MAY OCCUR WITH RESPECT TO PRODUCT IMPROVEMENT.</p>			

