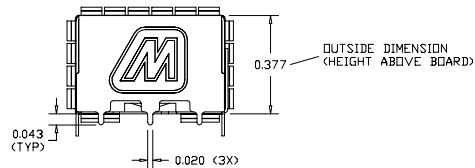
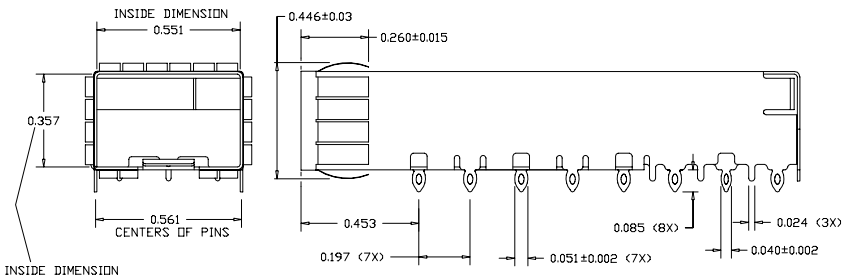


REVISION AND CHANGE EFFECTIVITY DATE				
LTR.	ECN	DESCRIPTION	DATE	APP'D.
A		MODIFIED RADIUS ON GASKET	02/14/08	AP
B		MODIFIED SPRING TABS, TOLERANCE ON GASKET	06/03/08	AP
C		ADDED NOTE FOR MINIMUM PCB THICKNESS	08/12/08	AP



NOTES:

- 1) OPERATING AND STORAGE TEMPERATURE: -40°C TO +160°C
- 2) CAGE MATERIAL: 0.010" THICK BRASS ALLOY; C2680 - FULL HARD
- 3) CAGE IS SOLDERED AT SEAM AT 5 LOCATIONS
- 4) CAGE IS STAMPED "R" FOR RoHS COMPLIANCE
- 5) GASKET: 0.002" THICK BERYLLIUM COPPER
- 6) GASKET IS SPOT WELDED ONTO CAGE
- 7) PLATING: SEE PLATING OPTIONS

ORDERING INFO:

DM7054-085-X

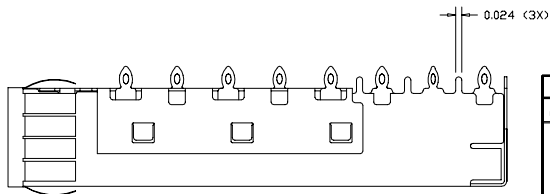
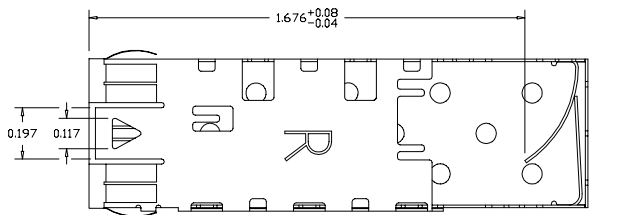
SERIES

SHORT PIN LENGTH (0.085")

PLATING OPTIONS:

(ALL ARE RoHS COMPLIANT)

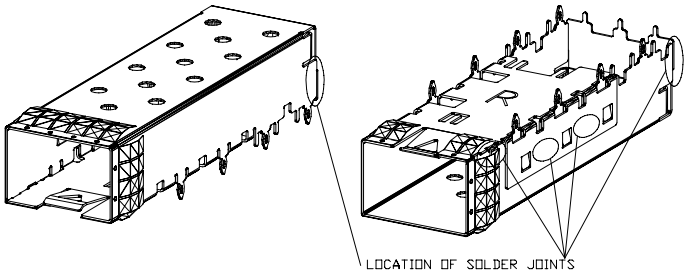
- R FOR 100µIN MATTE TIN OVER 50µIN NICKEL
NOT INTENDED FOR REFLOW
WAVE SOLDER ONLY - WAVE TEMP. 260°C FOR 6 SEC. MAX
- G FOR FLASH GOLD OVER 50µIN NICKEL
REFLOW COMPATIBLE - MAX REFLOW TEMP. 260°C
- N FOR 100µIN NICKEL
REFLOW COMPATIBLE - MAX REFLOW TEMP. 260°C



DO NOT SCALE DRAWING.

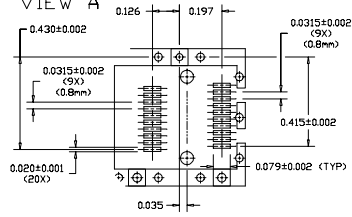
EXPERIMENTAL NO:		DIVISION ASSIGNED: dataMate Division	
TOLERANCE UNLESS OTHERWISE SPECIFIED	MATERIAL:	DRAWN BY:	DATE:
METRIC	SEE NOTES	A. PIRILLIS	09/14/07
±	FRAC:	CHECKED BY:	
±	DEC: XX ± .010	B. SKEPNEK	09/14/07
±	XXX ± .005	ENGR. APPROVAL:	
±	ANGLES ±	J. NOWAK	09/14/07
TOOLING DWG <input type="checkbox"/>	FINISH:	APPROVED BY:	
PART DWG <input type="checkbox"/>		A. CHIAPPETTA	09/14/07
BREAK SHARP EDGES		PART NO. CLASSIFICATION:	
REMOVE ALL BURRS			
THE INFORMATION DISCLOSED IN THIS DOCUMENT IS PROPRIETARY TO METROTEC AND MAY NOT BE USED FOR MANUFACTURE OF ANY OTHER		SIZE	CODE IDENT.
		C	DM7054-085-X
		DWG. NUMBER	Rev. C
		SCALE:	SHIT. 1 OF 2





RECOMMENDED FOOTPRINT

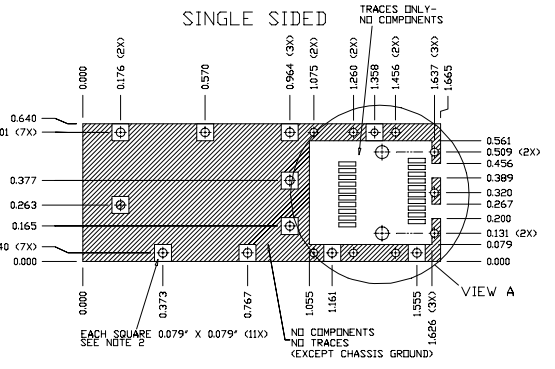
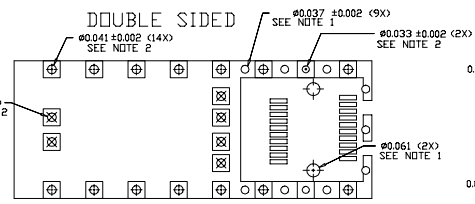
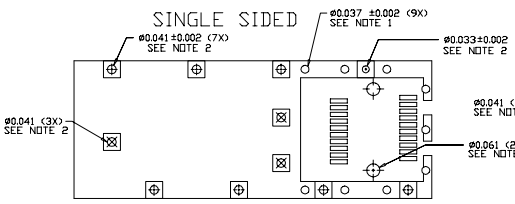
VIEW A



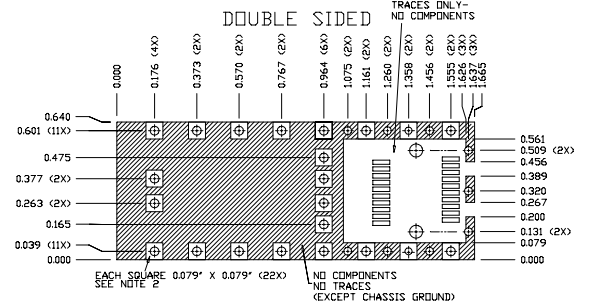
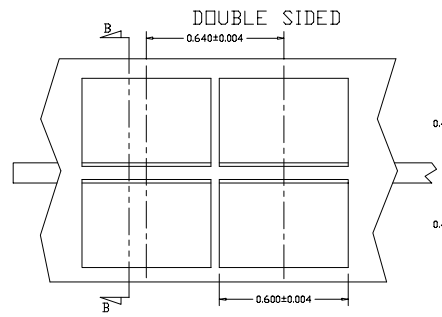
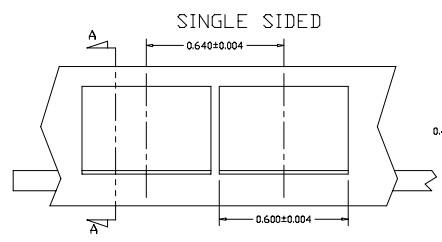
REVISION AND CHANGE EFFECTIVITY DATE				
LTR.	ECN	DESCRIPTION	DATE	APP'D.
A		MODIFIED RADIUS ON GASKET	02/14/08	AP
B		MODIFIED SPRING TABS, TOLERANCE ON GASKET	06/03/08	AP
C		ADDED NOTE FOR MINIMUM PCB THICKNESS	08/12/08	AP

NOTES:

- 1) THRU HOLES, PLATING OPTIONAL
- 2) PADS AND VIAS ARE CHASSIS GROUND, 11 OR 22 PLACES
- 3) MINIMUM PCB THICKNESS
0.093" FOR BELLY TO BELLY APPLICATION
0.062" FOR ONE SIDE PCB APPLICATION



RECOMMENDED PANEL CUTOUT



DO NOT SCALE DRAWING.

EXPERIMENTAL NO:		DIVISION ASSIGNED: dataMate Division	
TOLERANCE UNLESS OTHERWISE SPECIFIED	MATERIAL:	DRAWN BY: DATE	
METRIC FRACTIONS DEC XX ± .010 ANGLES ± .005	SEE NOTES	CHECKED BY: DATE	
TOOLING DWG PART DWG BREAK SHARP EDGES REMOVE ALL BURRS	FINISH:	ENGR. APPROVAL: DATE	
		APPROVED BY: DATE	
PART NO. CLASSIFICATION:		TITLE: SFP+ CAGE - ONE PIECE (IMPROVED) WITH GASKET SHORT PRESS FIT PINS	
SIZE: C	CODE IDENT.	DWG. NUMBER: DM7054-085-X	Rev. C
SCALE:		Sht. 2 OF 2	

